



GAT MONTHLY MEMBERSHIP PROGRESS REPORT

Results as of: 11/30/2023

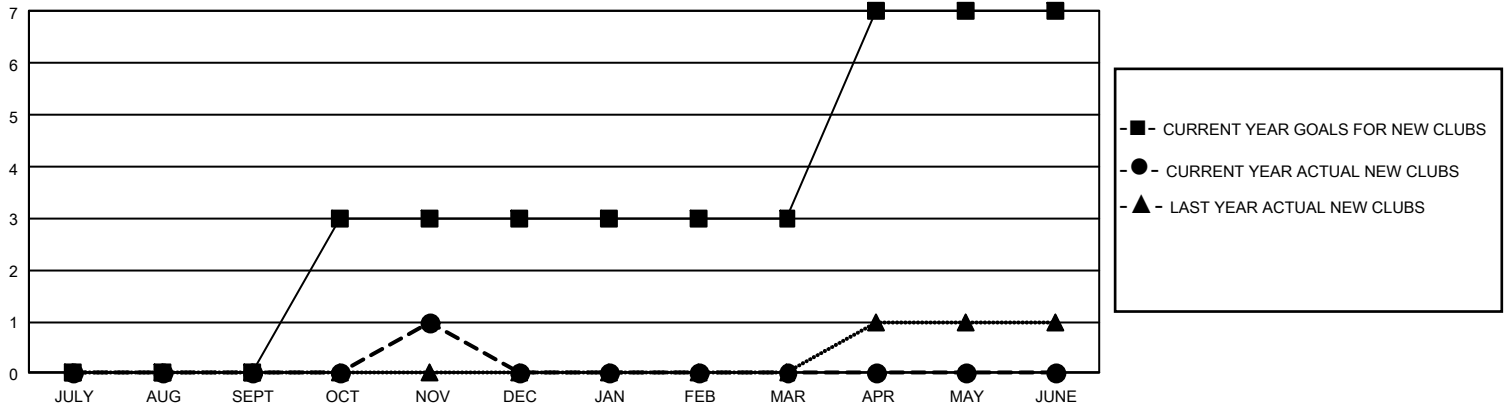
GMT Constitutional Area 7, Group B

REPORT DOES NOT INCLUDE CLUBS IN UNDISTRICTED AREAS.

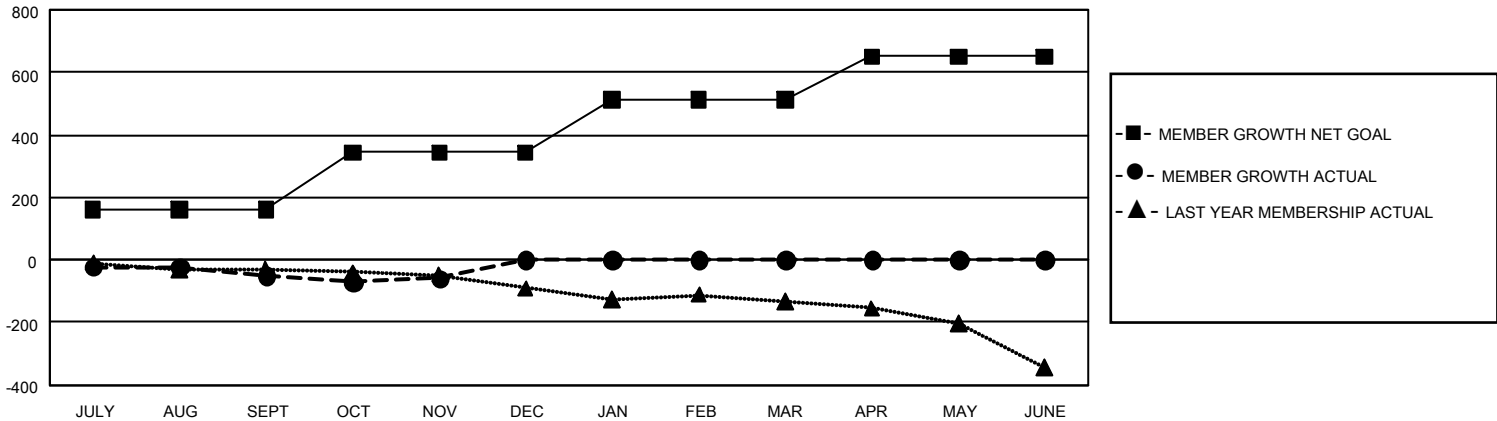
Clubs			
RESULTS FOR 2023-2024			
QUARTER	NEW CLUB GOAL	NEW CLUBS	DROPPED CLUBS
JULY/AUG/SEPT	0	0	3
OCT/NOV/DEC	9	1	0
JAN/FEB/MAR	0	0	0
APR/MAY/JUNE	12	0	0

Members			
RESULTS FOR 2023-2024			
QUARTER	MEMBER GROWTH NET GOAL	MEMBER GROWTH ACTUAL	DROPPED MEMBERS ACTUAL (including transfers)
JULY/AUG/SEPT	162	183	200
OCT/NOV/DEC	182	152	147
JAN/FEB/MAR	168	0	0
APR/MAY/JUNE	139	0	0

GOALS AND ACTUAL NEW CLUBS CUMULATIVE



GOALS AND ACTUAL MEMBERS CUMULATIVE



DROPPED CLUBS: 3	138 CLUBS OF 300 ADDED 1 OR MORE NEW MEMBERS	<u>GENDER DISTRIBUTION</u>	
		MALE 5,237 (66.96%) FEMALE 2,583 (33.03%) NON BINARY 1 (0.01%) PREFER NOT TO ANSWER 0 (0.00%)	
<u>DROPPED MEMBERS</u>		CLICK HERE FOR CUMULATIVE MEMBERSHIP DATA	TOTAL FAMILY UNIT MEMBERS 741
DECEASED 52 CLUB CANCELLED 0 OTHER 295 TOTAL 347			FAMILY MEMBERS PAYING HALF DUES 373